

# Light Bulb Comparison Box Interactive Educational Display Owners Manual



# TABLE OF CONTENTS

Introduction	2
Setting Up The Box	3
<b>Install The Power Cable AC Power Cable</b>	<b>3</b>
<b>Main Power Switch</b>	<b>4</b>
Tamper Proof Light Box Cover	4
Verify Your Light Bulb Comparison Display Box is Working	5
Recommended spare parts	6
<b>Maintenance</b>	<b>6</b>
<b>Sales &amp; Support</b>	<b>7</b>

## Introduction

This educational / interactive human powered light display is extremely effective at teaching people about energy. The 3 way light bulb interactive display allows you to easily demonstrate the difference in power consumption between incandescent / CFL / LED type bulbs. The default color for this display is black. If you would prefer a different color you may contact customer support for other options. Many power utility companies and light bulb manufactures use this kind of display because it is very intuitive.

The digital meter on the front of the box clearly shows the dramatic difference between the higher power incandescent and the more efficient bulbs of our time with 4 different power measurements (Volts, Amps, Watts, and Kilowatt hours).

This unit sets up in minutes by plugging it into the wall and then installing the light bulbs of your choice. The total power of all three bulbs should not exceed 300 Watts.

Custom software can be provided with your company logo on a laptop computer that shows a bright screen read out chart or panel dials - with real time data. For custom solutions contact us <http://PedalPowerGenerator.com>.

### Recommended Bulb Configuration

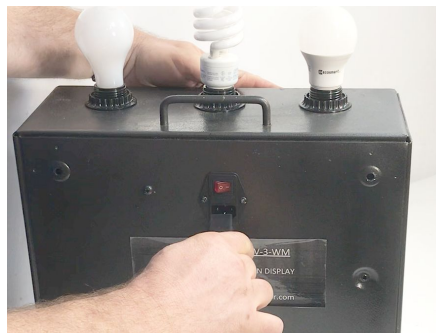
- 1) LED bulb consuming about 12 Watts
- 2) CFL bulb (AKA compact fluorescent) consuming about 12 Watts
- 3) Incandescent bulb consuming 60 Watts

## Setting Up The Box

It is important to set the light bulb comparison display box on a level surface. For permanent installations it is acceptable to bolt it down to a table. Make sure that the table is stable and that the power cord is taped down to the floor if there are people walking around the display.

## Install The Power Cable AC Power Cable

One end of the power cable is to be plugged into a regular wall outlet. The other end shall be placed into the back of the box.



## Main Power Switch

The main power switch is located at the rear of the box where the AC power cord plugs in. It will be necessary to turn this on when operating the interactive comparison display. The “O” setting is off and the “|” setting is on.



## Tamper Proof Light Box Cover

When the light box display is not supervised by an adult it is necessary to install a cover over the light bulbs. This will prevent children from tampering with the bulbs and possibly hurting themselves.

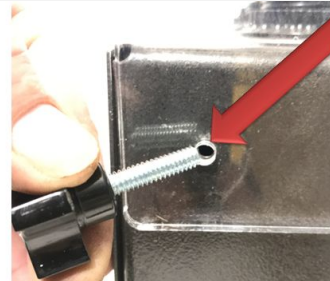


<http://PedalPowerGenerator.com>

**Place the clear cover on the top of the box as shown**



**Install 4 thumb screws as shown**



**When finished it should look like this**

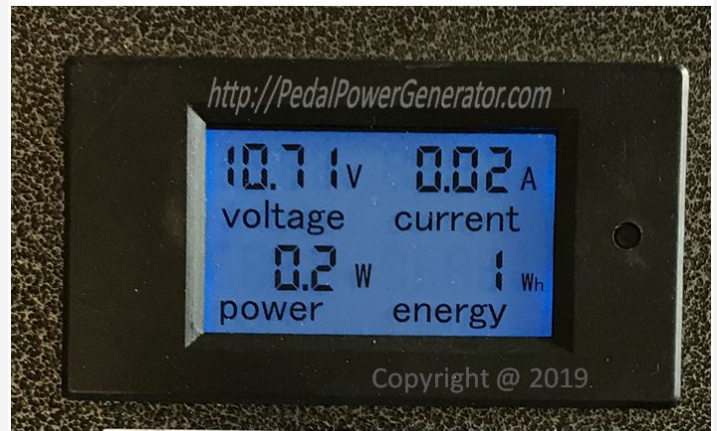


## **Verify Your Light Bulb Comparison Display Box is Working**

**Screw in three light bulbs into the display box. The power display should light up when the box is turned on. The Voltage parameter should be reading around 110V .**

**Next turn on one light bulb at a time and verify how much each bulb is consuming.**

**The parameter labeled “power” will show a number and the letter “W” indicating Watts. (note: Power is measured in Watts.)**



## Recommended spare parts

A spare fuse and extra light bulbs are the only recommended spare parts. Fuse size is the F5AL fast blow mini-fuse - shown here: <https://amzn.to/37uJ7HQ>

## Maintenance

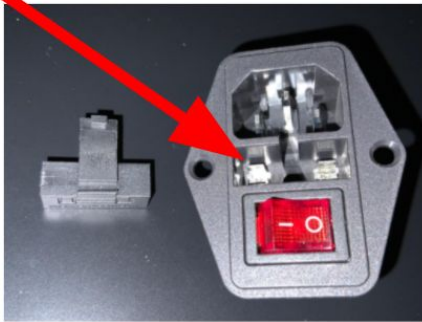
If the lights fail to come on and the power meter does not light up then most likely the fuse is blown.

**IMPORTANT SAFETY NOTICE:** It is critical that the AC electrical cord be removed from the back of the display box so that it looks like the image shown below. If the cord is not removed it could cause death or injury .

The fuse compartment door slides out as shown below which reveals the fuse socket. Remove the old fuse and put a new fuse in. Before turning the power on

FUSE SOCKET 10A Max

Replacements sold at <https://amzn.to/37uJ7HQ>



# Sales & Support

Email: [pedalpowergenerator@gmail.com](mailto:pedalpowergenerator@gmail.com)

Website: Pedalpowergenerator.com

BDW Enterprises LLC  
1293 E. Parkview Dr.  
Gilbert, AZ 85295  
Phone: 480-489-4111